



**Southern Maryland Sailing Association
Small Boat Dinghy Distance Race
“4th Annual Broken Rudder” – 8 June 2019**

NOTICE OF RACE

DATE

Saturday, 8 June.

First signal on the water at 1100 hrs.

REGISTRATION & FEE

Included in Annual Small Boat Race Fee or \$20 for non-members and members who have not paid an annual race fee. Entries are due by 0930 on 8 June at the Competitors Meeting. All individual SMSA Members who pay the fees are considered registrants and no other registration actions are required. Send entries to: Small Boat Race Chair – PO Box 262, Solomons, MD 20688. Send questions to smallboatrace@smsa.com.

COMPETITORS MEETING

0930 Saturday, 8 June at the SMSA Clubhouse.

CLASSES

Anticipated classes are: Laser, Buccaneer 18, and Portsmouth. The RC may, before the first race of the day, depending on the number and type of entries, combine classes, elect to score additional classes.

SOCIAL

SMSA clubhouse after racing for a results presentation. Availability of refreshments and snacks for purchase is planned.



SAILING INSTRUCTIONS

1. RULES

1.1. The regatta will be governed by the rules as defined in The Racing Rules of Sailing 2017-2020.

2. CHANGES TO SAILING INSTRUCTIONS

2.1. Any change to the sailing instructions will be announced at the competitors meeting at 0930 Saturday, 8 June 2019 at the SMSA clubhouse.

3. SIGNALS MADE ASHORE

3.1. Signals made ashore will be displayed on the flagpole at the rear of the SMSA Clubhouse.

3.2. When the flag AP is displayed ashore, '1 minute' is replaced with 'not less than 30 minutes' in the race signal AP.

3.3. When flag Y is displayed ashore, rule 40 applies at all times while afloat. This changes the Part 4 preamble. Violation of this provision is not subject to protest or cause for redress.

4. SCHEDULE OF RACES

4.1. First warning will be at 1100 on Saturday, 8 June 2019.

4.2. It is the intention of the Race Committee to hold one race.

5. RACING AREA

5.1. The racing start area will be located on the lower Patuxent River in the vicinity of Solomons Island.

6. COURSE

6.1. See Attachment A , Area C for the starting area.

6.2. The Race Committee will announce their intentions for the race course to be sailed during the Competitors Meeting. See Attachment B for the three possible courses: 1 West Pax, 2 Bay, and 5 Pax Navigator. At the discretion of the RC courses 2 & 3 may be reversed and course 3 may be shortened. Courses 1 & 2 may only be abandoned by the RC.

6.3. Should it be decided that conditions warrant a change the Race Committee may select a new course from Attachment B and announce its intentions by hailing competitors before the race sequence begins. The RC may announce a shortening of a course before the race sequence.

6.4. All government marks are considered marks of the course and must be passed on the proper side. This shall include marks indicating shoals or obstructions such as the white obstruction mark off Town Point on the south-east side of the Thomas Johnson Bridge.

6.5. The Race Committee may, if possible, post the course designation on the rail of the Signal Boat.

7. CHECK IN

7.1. Each boat shall sail by the race committee signal boat, hail her sail number and be acknowledged by the race committee with a return hail of her sail number. This shall be done before a boat starts the race.

7.2. A boat failing to comply with the check-in procedure shall receive, without a hearing, a 20% scoring penalty in the first race in which the boat competes, calculated in accordance with RRS 44.3(c). This changes rule 63.1 and A4.



8. THE START

- 8.1.** It is anticipated that each Class will start separately with rolling starts but the RC may modify this at its discretion. The RC will hail the starting order prior to each race.
- 8.2.** Appendix S, – Sound Signal Starting System, will replace Rule 26, Starting Races. The RC may elect to display a class flag at the warning signal for each class. Audible signals shall govern, even when supplemental visual signals are also used.
- 8.3.** The starting line will be between a yellow flag on the RC boat and the designated adjacent race mark.
- 8.4.** Boats whose warning signal has not been made shall not enter the starting area during the starting sequence for other races.
- 8.5.** It is incumbent on the competitor to time the start correctly. If any part of a boat's hull, crew or equipment is on the course side (OCS) of the starting line at immediately prior to her starting signal and she is identified, the race committee will hail her sail number in accordance with Appendix S. Failure of the competitor to hear the hail or failure of the race committee to time it accurately will not be grounds for a request for redress. This changes rule 62.1(a).

9. THE FINISH

- 9.1.** The finish line will be between a yellow flag on a Race Committee boat and the designated adjacent race mark.

10. PENALTY SYSTEM

- 10.1.** The penalties are as follows: One-Turn Penalty (1 tack and 1 gybe in same direction), RRS Appendix D1.3 (a), will apply. This changes Rule 44.1.

11. TIME LIMITS

- 11.1.** The time limit shall be 1700 hours of the same day the race is held or 2 hours after the first finisher, whichever is earlier.
- 11.2.** In case of delay, no race will be started after 1300 hours.

12. PROTESTS

- 12.1.** Protests shall be hailed to the Race Committee immediately following the race in which the infraction occurred. The protest shall then be lodged with the Race Committee at SMSA within one hour of the finish time of the last boat in class after the last race of the day or at the time of Race Committee arrival at the SMSA Clubhouse, whichever is later. Protests will be heard before the announcement of finishers.

13. SCORING

- 13.1.** Results will be computed using the Low Point scoring system of RRS Appendix A.
- 13.2.** One race is required to be completed to constitute a regatta.
- 13.3.** The race must be conducted as a distance race with a minimum distance of 5 nautical miles for eligibility for the perpetual trophy.



14. SAFETY REGULATIONS

- 14.1.** Prior to her first warning signal, a boat shall check in by sailing close abeam of the signal boat and hailing her sail number and class.
- 14.2.** A boat that retires from a race shall notify the race committee as soon as possible.
- 14.3.** A boat shall carry all equipment required by her class rules. If not so specified, she shall also carry one USCG approved PFD, of the appropriate class, for each person on board.
- 14.4.** It is recommended that a boat carry 1 hand held VHF radio and be familiar with its use.
- 14.5.** All boats shall have available an appropriate line, not less than 25 feet long, which can be used for towing. Violation of this provision is not subject to protest or cause for redress but the RC may elect not to provide a tow for a vessel without a conforming tow line. Use of running rigging to satisfy this requirement is prohibited.
- 14.6.** Competitors should always be alert for a code flag Y displayed from any Race Committee boat invoking Rule 40. Competitors that do not comply with rule 40 when Code Flag Y is displayed shall be scored DSQ.

15. TRASH DISPOSAL

- 15.1.** Boats shall not put trash in the water. Trash may be placed aboard support and race committee boats.

16. RADIO COMMUNICATIONS & ELECTRONICS

- 16.1.** Except in an emergency, a boat shall neither make radio transmissions while racing nor receive radio communications not available to all boats. This restriction also applies to mobile telephones.
- 16.2.** The use of electronics for compass bearing, mark routing, or the reception of weather data that is publicly available and not behind a paid wall is permitted. The use of any private and/or paid service or course optimizing software is prohibited.

17. PRIZES

- 17.1.** Prizes will be given at the conclusion of the series. Awards/#Boats per class: 1st/3 2nd/5 3rd/7.

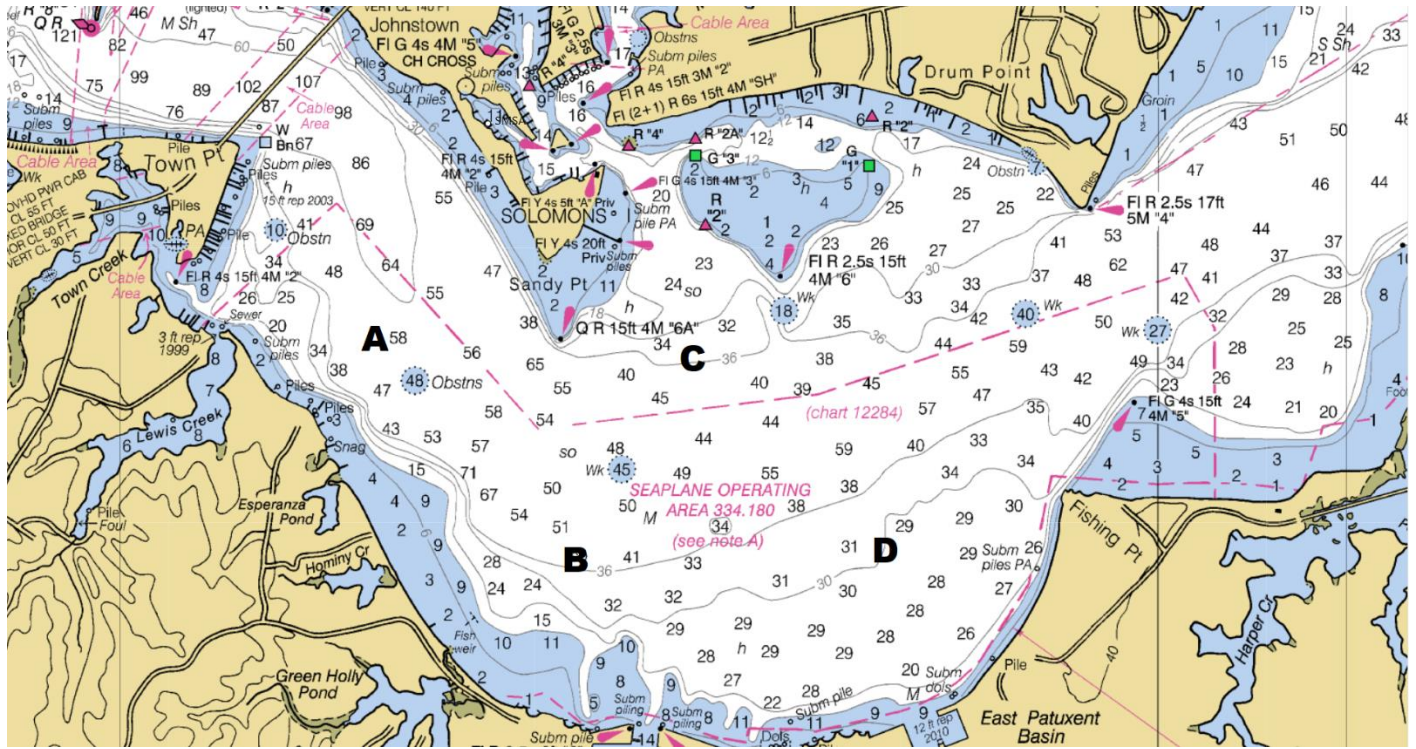
18. DISCLAIMER OF LIABILITY

- 18.1.** Sailboat Racing is an inherently dangerous activity that may result in injury or death. Competitors participate in the regatta entirely at their own risk. See rule 4, Decision to Race. The organizing authority will not accept any liability for material damage, personal injury, or death sustained in conjunction with, prior to, during, or after this event.



Attachment A – Areas

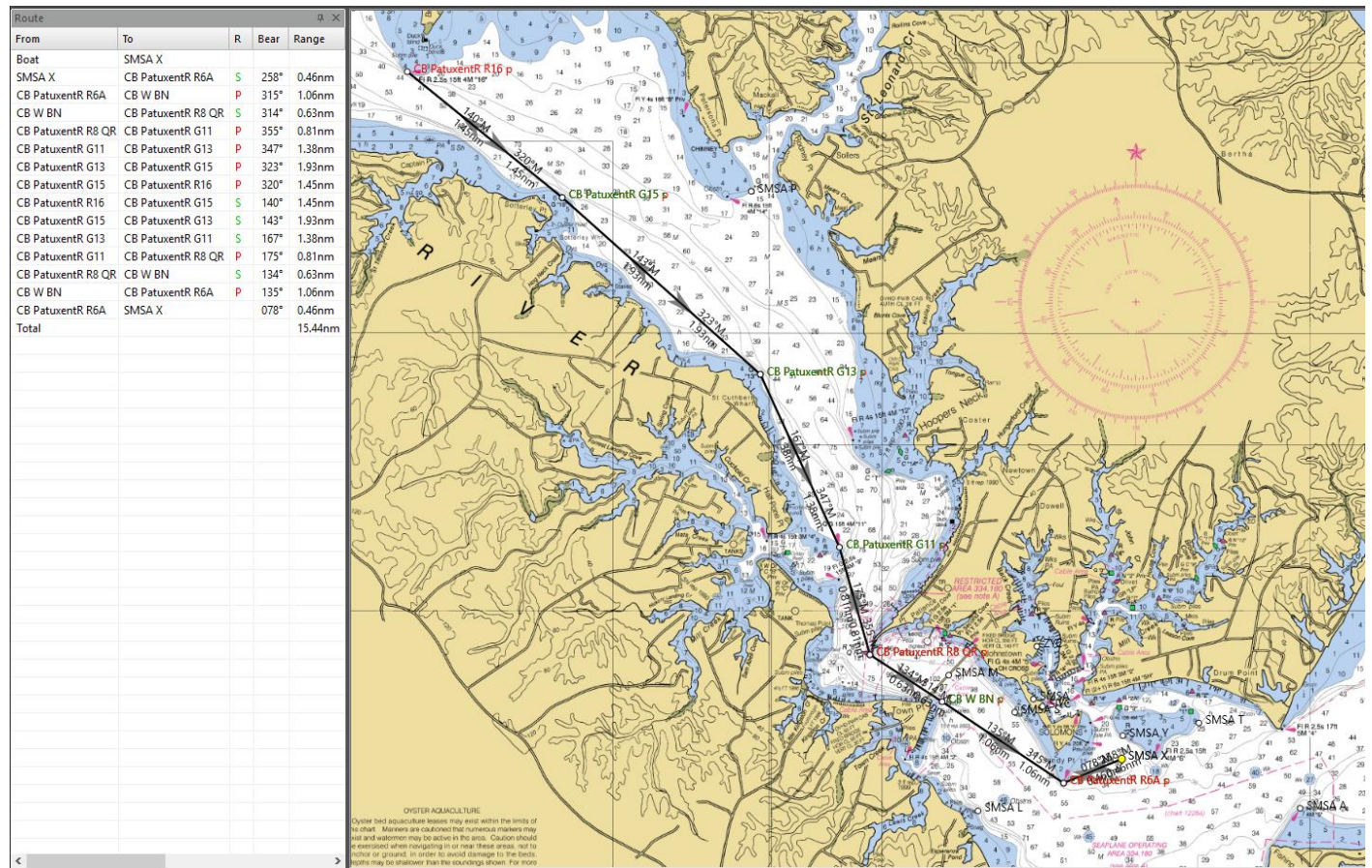
Sailing Areas A, B, C, & D





Attachment B – Courses

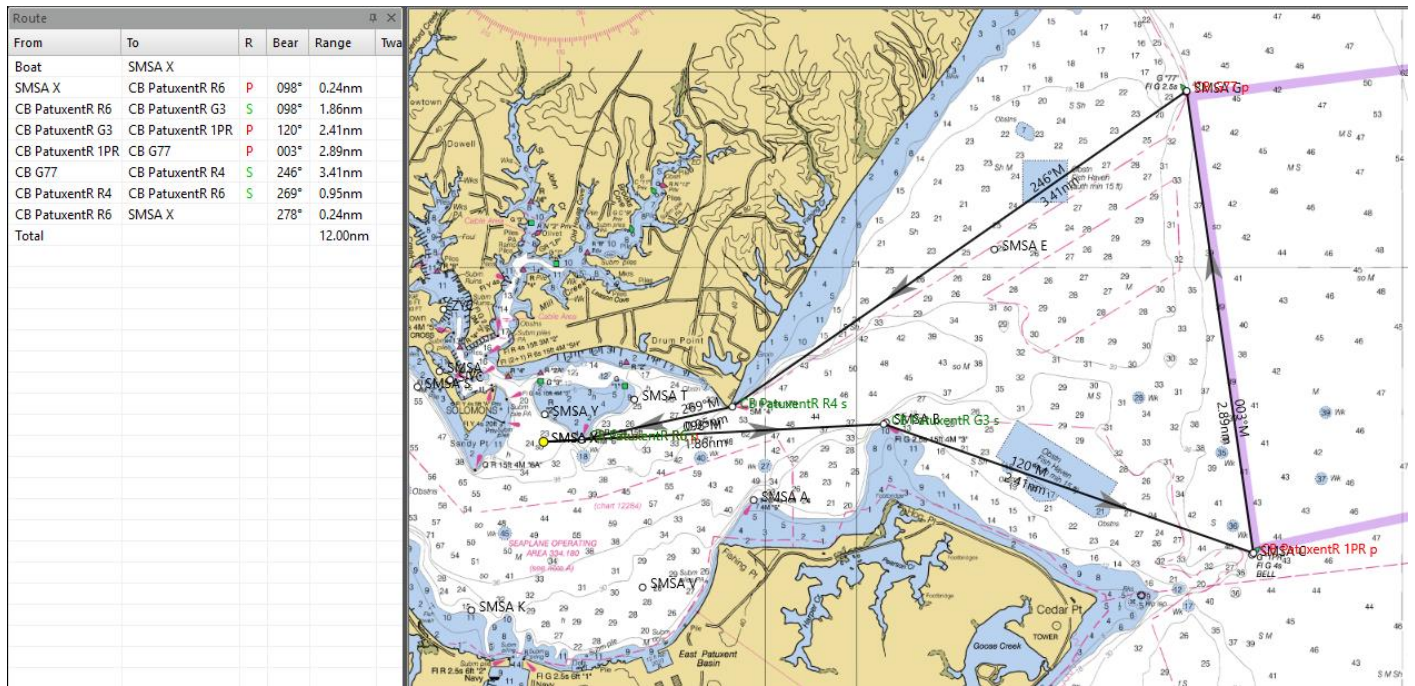
Course 1 – West Patuxent River





Attachment B – Courses

Course 2 – Bay





Attachment B – Courses

Course 3 – Pax Navigator

From	To	R	Bear	Range	Twa
Boat	SMSA X				
SMSA X	CB PatuxentR G5	S	117°	1.34nm	
CB PatuxentR G5	SMSA K	S	260°	1.87nm	
SMSA K	SMSA M	P	345°	1.84nm	
SMSA M	SMSA L	P	179°	1.01nm	
SMSA L	SMSA V	P	119°	1.73nm	
SMSA V	SMSA X		337°	1.09nm	
Total				8.88nm	

